

ISSENDORFF KG

factory: 1

Wellweg 93
31157 Sarstedt

telephone: +49 50 66 / 99 8 0
central-FAX: +49 50 66 / 99 88 99
hotline-technical: +49 50 66 / 99 88 44
hotline-planning: +49 50 66 / 99 88 55

internet: <http://www.LCN.de>
<http://www.LCN.eu>

E-mail: info-de@LCN.de

factory:2

Magdeburger Straße 3
30880 Rethen

This document corresponds to the technology at the time it was created.
Errors and changes are reserved.

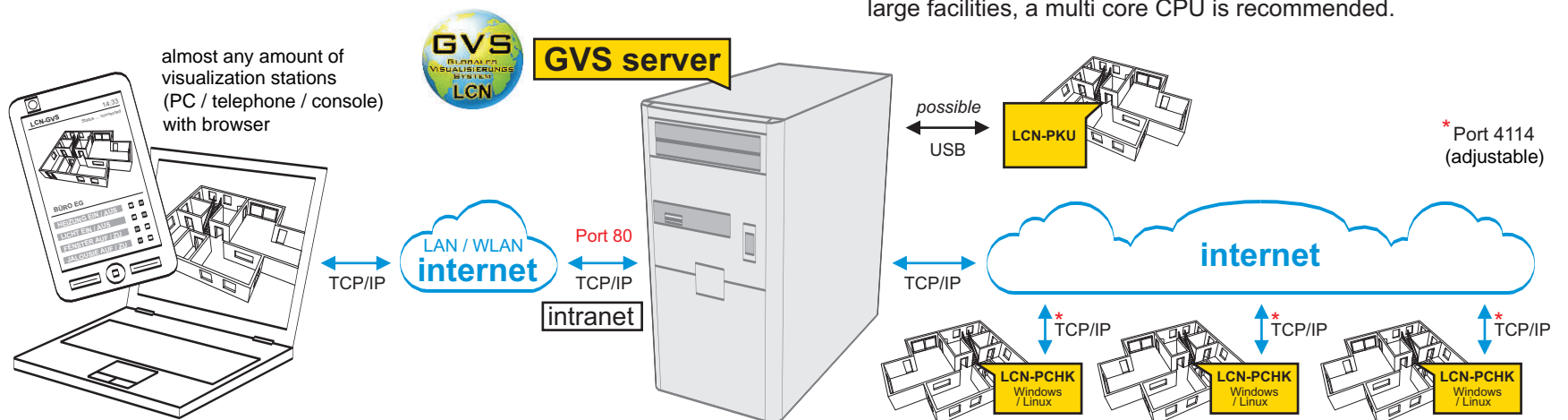
All brand names are used under recognition of the ownership of the registered brand holders. LCN is a registered trademark of the ISSENDORFF KG, 31157 Sarstedt.

Copyright © 2010 ISSENDORFF KG

LCN-GVS: The concept

LCN-GVS is installed on a windows PC and serves as a central web server for all LCN buildings worldwide. Any amount of users can visualize and control over a web browser.
A special program is not necessary on the visualization station.

You will find detailed informations under help on the CD (GVS help.chm).



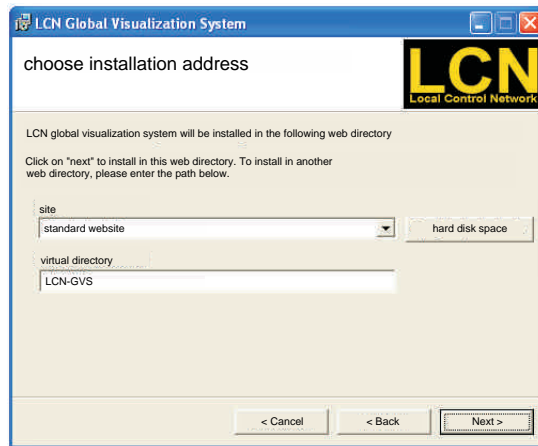
System requirements

- Operating systems. MS XP_{prof}, Win7_{prof}, WinVista_{business} or 2003/2008 servers.
Note: XP_{prof}, WinVista_{business} and Win7_{prof} only allow 40 browser connections at the same time.
- Ethernet TCP/IP for remote access (ports 80+4114 must be open).
- Access to LCN-bus systems in worldwide buildings over internet (LCN-PCHK) or locally over USB-interface (LCN-PKU).
- Server-hardware: PC with 1GByte RAM and small CPU. With very large facilities, a multi core CPU is recommended.

Installing the GVS-server

Preparation: To make the GVS server accessible over internet, your internet router access from the outside must be redirected to the GVS server on port 80 (browser) "port forwarding". If you do not have a fixed internet address, you should activate the DynDNS, see the handbook from your internet provider.

- Sign-on to the server-PC as an administrator.
- Call up the program **LCN-GVS Setup.exe** on the LCN-GVS CD.
- Enter at choose "installation address" under "virtual directory" the name in which the LCN-GVS should be called up in the address path of the web browser.
- The standard is: **LCN-GVS**
- Done!



Using LCN-GVS

The LCN-GVS server starts automatically after being installed.

- to call up LCN-GVS on the PC, on which the GVS-server is installed, enter the call-up path **localhost/LCNGVS** into the address path of your web browser.
- For access to the LCN-GVS over internet, enter the address of the LCN-GVS server-PC and the path for the "virtual directory" into the address paths of your web browser.
Example: **http://www.Mein-GVS-Server.net/LCNGVS**
- Users name und password on the very first call-up:
User: **lcn** password: **test123**

Note: the user „lcn“ has been set up before as administrator. It is highly recommended, to change the password for "lcn".

Logging off

- Click in the toolbar on "lcn log off".

Operation

Detailed information for operation, can be found in the online-help. (F1-key or open file "LCN-GVS.chm on the CD")

The help does not replace a training course: We recommend that you visit an LCN-GVS training course to make sure, that you can really use all of the many possibilities of the system.

