

### Configuration program for the LCN-Bus

LCN-PRO is the tool for the installer.

He/she can pre-program the modules in the office (offline operation) and transfer it at a later stage into the facility. With a direct connection to the facility (online operation), the data are transferred to the modules straight away. LCN-PRO works with a project file (data bank), in which the programming of the modules is stored. You can parameterize many projects with the LCN-PRO. A separate project file will be applied for each of them.

### The start

when first starting the LCN-PRO, you can choose between the online and the offline operation. Should you already be connected to a complex, you can choose the used interface (COM1, etc. or TCP/IP) and then change into the online mode.

If no contact can be made with the complex, the LCN-PRO is working in the offline mode. In the offline mode, all alterations are transferred to the data bank and the changed modules will be marked (hand symbol) in the online mode. your parameterization can then be transferred to the facility.

With first contact to an existing facility, the LCN-PRO can read out the facility completely or just “names and comments” of the modules. When completely reading, a new data bank will be applied, this may take a few minutes.



With every further start of the project, only the changes will be updated.

reading the “names & comments” will give a quick description over the facility.

Thanks to Multi-Tasking, the facility can be modified while reading out: simply click on the function of a module and the LCN-PRO will this read out first.

### Comments

With version 3.1 or later, comments on the single keys, outputs, etc., can be stored in the modules, so that every programming is easily understandable, even after many years.

The amount of characters for modules are, serial number:

0A... 300 characters (year 2000 or later)

0E... 432 characters (year 2004 or later)

10... 528 characters (year 2006 or later)

### Templates

In the offline mode, modules can be added to a project per Drag & Drop. In this way a project can be pre-programmed, without having to read out the facility beforehand.

a further possibility is also, pre-programming a facility using self made templates. Complete facilities can be programmed in this way, without having to install a single module.

This way of programming, can be a great relief when programming large facilities, when a similar programming is repeated.

**Operation**

The LCN-PRO can be operated very good apart from with the mouse, by using the keyboard. The important keys here are:

ENTER, ESC, TAB , arrow- and the function keys.

**Instructions**

For further detailed informations about the program, online help is available as a printed version, on the LCN-PRO CD in the folder documentation.

**Documentation**

The complete programming and the comments can be printed or saved as data with the LCN-PRO, so that a facility can be easily documented.

**Supporting older LCN modules**

LCN modules manufactured after year 1997 are supported. The LCN-PRO only partly supports older modules. If you have any questions, then please call our hotline under 0049 5066 998844.

**System requirements**

operating system: Windows 2000, XP, Vista & 7

hardware:

- min. 500MHz
- min. 64 MB RAM,
- CD-ROM drive
- free USB-interface
- 6 MB hard disc storage for installation and operation

**menu options:** You can change languages here or e.g. enter a general password.

**Group scheme:** shows all programmed groups.

**Project scheme:** shows all modules in the facility and offers the parameterization.

### Symbols

- module ist offline
- module ist online
- Light scenes available
- module is not programmed
- not progr. module ist offline
- module programming is not identical with data bank
- module/option is waiting to be read out
- module/option is being read out
- module is password protected
- module/option not read out
- module/opt. is being progr.
- module is not supported (before year 1997)

**Function scheme:** Helps to search for errors: shows, from where outputs, etc. are being controlled.

**Buttons to switch online/offline**

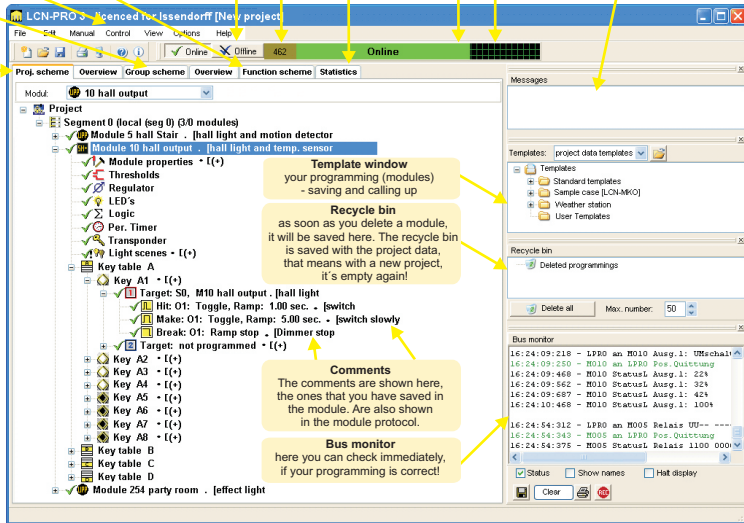
**Statistics:** shows sending & receiving behaviour

**Status display of the PC coupler**

**Message window**  
Lists error messages like: module is password protected, module rejects commands or module is not in programming mode, etc.!

**telegram counter**

**Bus activity**



Technical information and images are non binding. Changes are reserved.